

Reduces wiring  
and expands  
system scale...

Can be extended up to 1008 I/O  
points, 2 channels for 63 node  
and 400 meters. (9Mbps, 2ch)



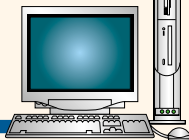
**Type-B:**  
Built-in Flex Network I/F

**Built-in Flex  
Network I/F for  
use with...**

¥1-axis Positioning Unit  
¥High-speed Counter Unit  
¥Analog Units  
¥DIO Units



Data Transfer  
Cable  
GPW-CB02



LogiTouch Development  
Software  
LogiTouch Editor  
GLCLT-ED01W-V10 or greater

6Mbps (400m) / 12Mbps (200m) 2 channels

Flex Network Communication Cable  
50m: FN-CABLE2050-31-MS  
200m: FN-CABLE2200-31-MS

Maximum 1008 I/O Points

## Flex Network I/O System

16-point  
Sink/Source Input



FN-X16TS41

8-point Sink/Source Input,  
8-point Sink  
Transistor Output



FN-XY08TS41

8-point Relay  
Output/1 Common



FN-Y08RL41

16-point  
Sink Output



FN-Y16SK41

16-point  
Source Output



FN-Y16SC41

4-channel  
Analog Input Unit



FN-AD04AH11

4-channel Analog  
Output Unit



FN-DA04AH11

High-speed  
Counter Unit



FN-HC10SK41

1-axis  
Positioning Unit



FN-PC10SK41